



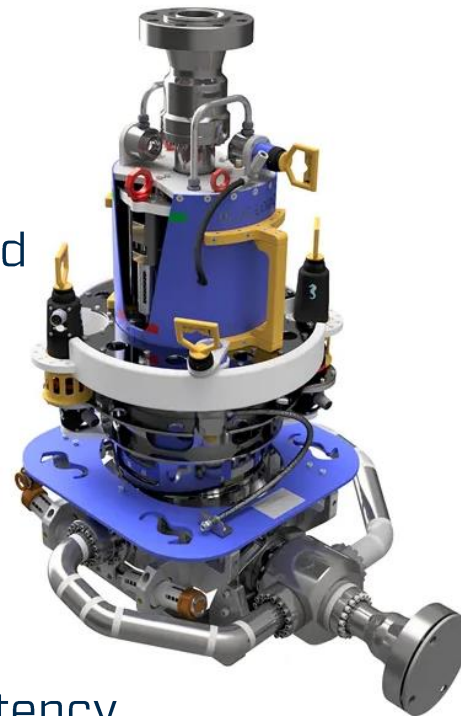
BLUELOGIC



# WHO WE ARE

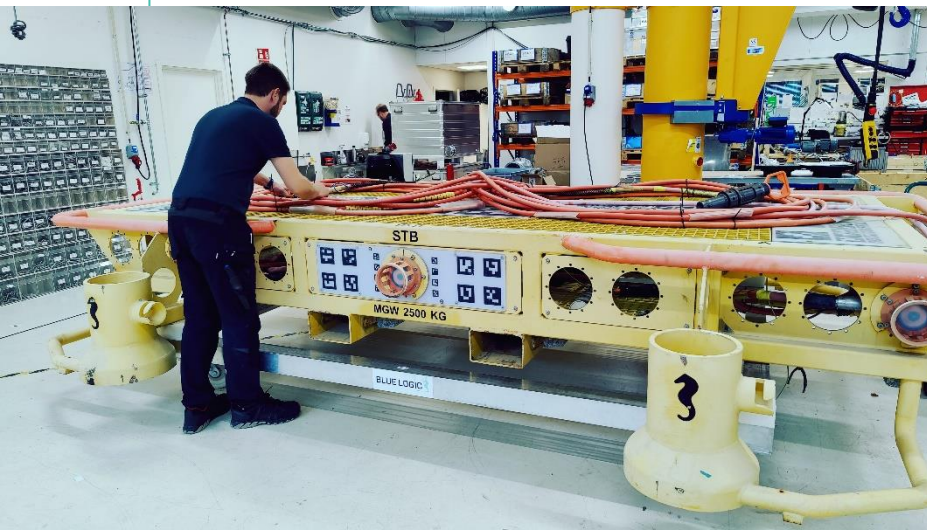
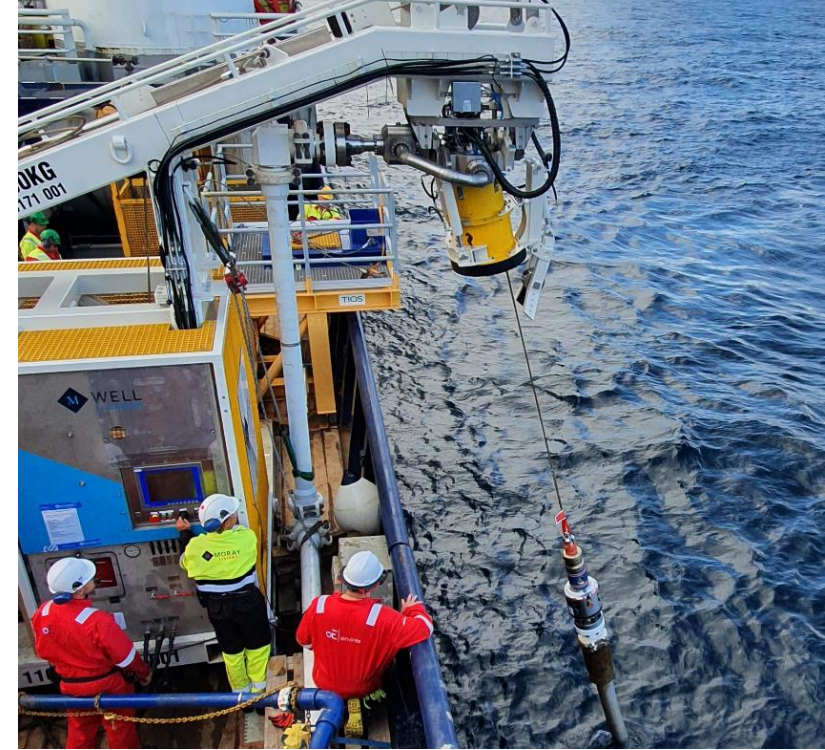
Subsea company focusing on cost efficient and environmentally friendly products and services/projects.

- Located at Forus/Norway since 2010
- Office, workshop and warehouse
- 30+ employees.
- Extensive technical experience and competency



# BLUE LOGIC PHILOSOPHY

- Subsea interface specialist
- High quality industrialised subsea products
- Clean connections – zero spill – environmental friendly
- Off-the-shelf delivery
- Hands-on engineering, A-Z
- Employees with long subsea experience
- Skilled engineers with offshore experience
- Contributor to subsea standards - API 17H
- Flexible; creative solutions based on our standard products



BLUE LOGIC

# WHAT WE DO

- Off-the-shelf subsea products

- Hydraulic
- Mechanic
- Electric



E-Sea Webshop



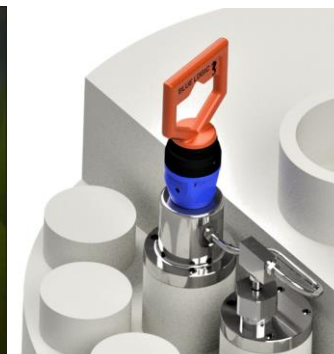
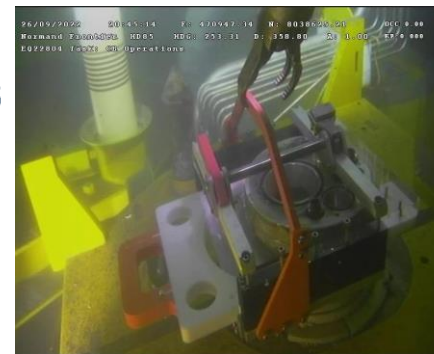
- Rental of standard products

- Hydraulic / Mechanic / Electric
- Cost-effective for Client
- Valuable product feed-back for Blue Logic



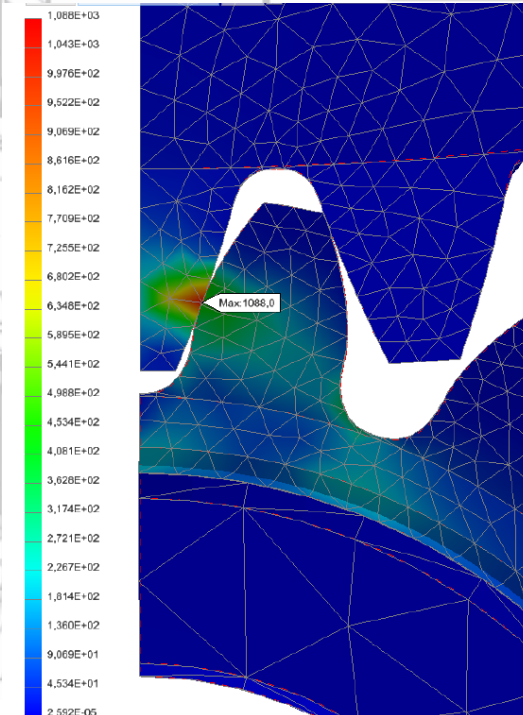
- Delivery of bespoke systems and solutions

- Based on Blue Logic standard components
- A-Z delivery - sketch to offshore support
- Inhouse assembly and test - hands on



# OUR COMPETENCY

- Engineering
  - R&D
  - Studies
  - FEM analysis
  - Detail engineering
  - Multidiscipline and system integration
- EPCI capability, A – Z philosophy
- Product development
- Standard products in stock – quick delivery
- Hi-quality rental products
- Qualification of subsea equipment and tools
- Assembly and testing
- Contributor to API subsea standards
- Product Lifecycle Management



# STANDARD PRODUCT CATEGORIES

## 1. Hydraulic Products

- Hot Stabs and Receptacles
- ValveStabs
- Check Valves, Relief Valves, Surplus Valves, Flow and Pressure Control
- Pull-Heads for risers and umbilicals
- Auto Release for well stimulation operations



## 2. Mechanical Products & Actuation

- Electrical Torque Tools, Class 1-4
- Gearboxes, Class 5-7
- Fail-Safe Actuators
- ROV Handles
- ROV Valve Handles
- MultiDog Lifting connectors, 2 -1000Te



## 3. Electrical Products

- Inductive Connector System for wireless power and data
- Subsea Drone Charging



BLUE LOGIC

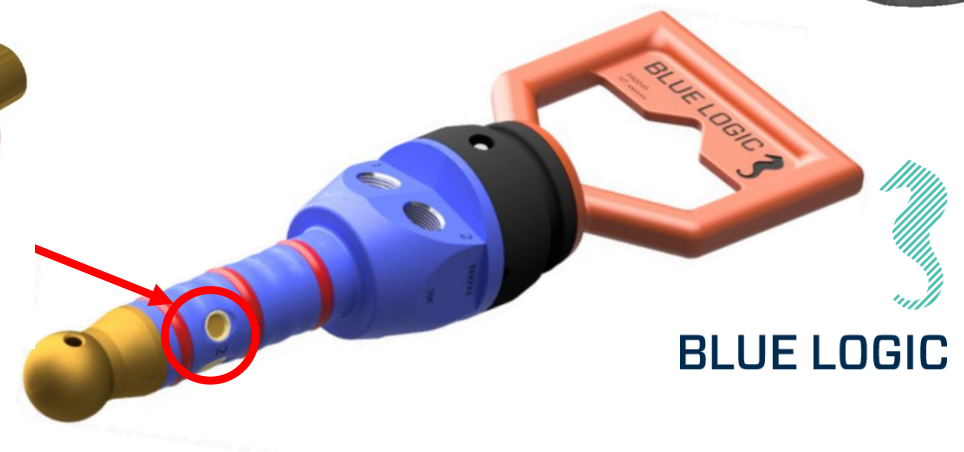
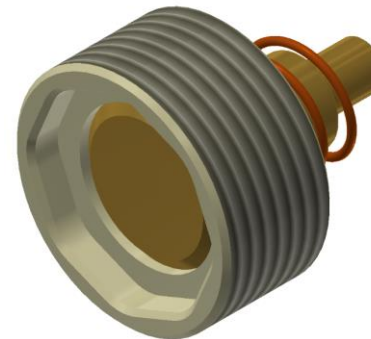
# HOT STABS AND RECEPTACLES

Subsea quick-connectors for fluid and gas

- Complete program Ø35 to Ø200, ¼" - 10" bore
- 5 000Psi – 20 000Psi
- Flow Stabs, Receptacles, Pressure Stabs, Dummy Stabs, Protection Stabs, Parking Receptacles
- Various sizes, 1-6 ports

## Features:

- High flow – low pressure drop
- Integrated Check Valves; no leakage - no water ingress
- Durable and field-proven seal systems
- Off-the-shelf delivery
- Intervention or permanent service
- Sour service capability



BLUE LOGIC

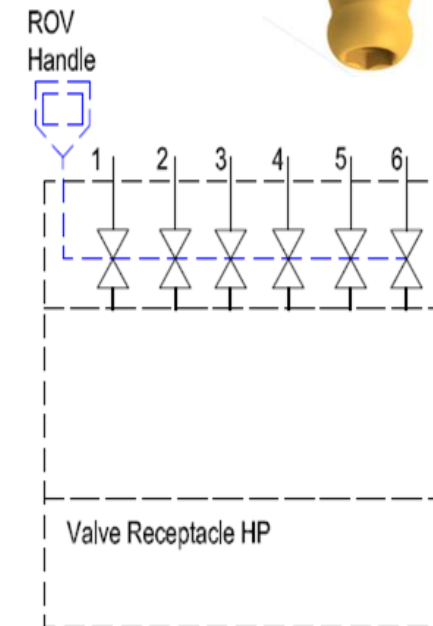
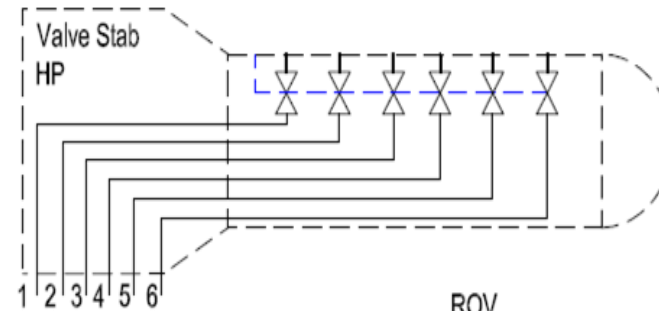
# BLUE LOGIC VALVESTAB™

## Hot Stab with isolation valves

- Combining Hot Stab and Ball Valve technologies
- Full working pressure - connected and disconnected,
- Double barrier to sea
- ROV or diver
- Pressure balanced connection
- 1-6 ports

### Features:

- High flow capacity, low pressure loss
- No leaks – no water ingress
- No check-valve spring force to overcome
- Easy operation – open/close all valves in one go
- No need for ROV panel with valves extremely compact subsea solutions



# VALVE STAB APPLICATIONS

## ROV Panel Substitute

- Receptacle with valves – one unit
- Compact – ideal for tooling
- Cost-effective



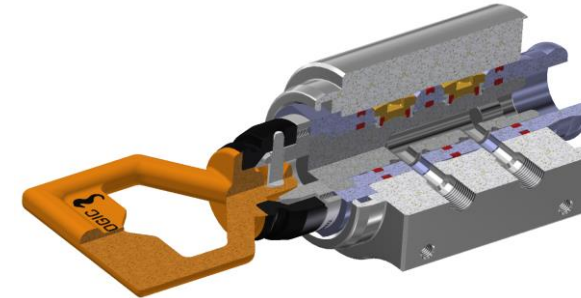
## Pull Head

- Integrated ValveStab receptacle
- Compact
- High-flow



## Auto Release

- Subsea well stimulation
- Automatic Emergency Quick Disconnect, EQD
- Upon EQD: ValveStab closes both valves



BLUE LOGIC

# ACTUATION

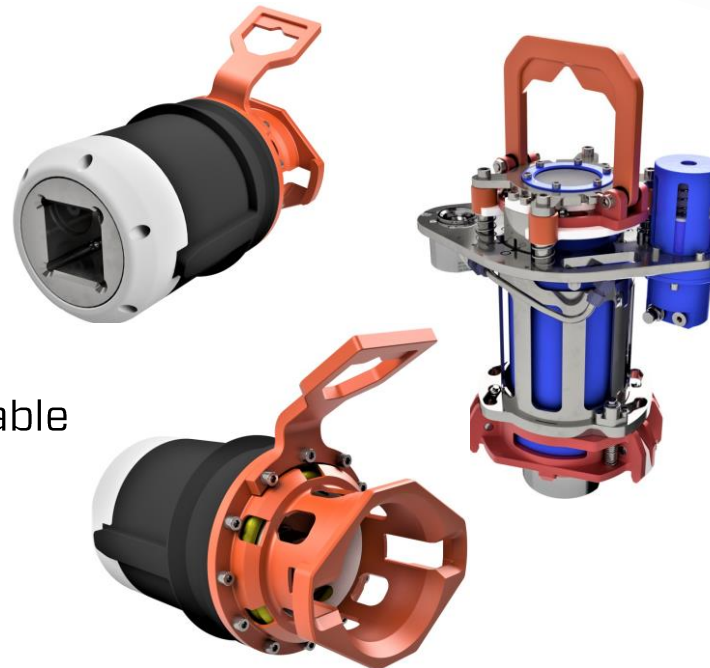
## Electrical Torque Tools

- Exchangeable Outputs, Class 2 to 4
- Auto-switch - High and Low torque mode
- Precise operation
- Full control of all parameters
- Log functionality (all parameters)
- Light weight version – drone integration



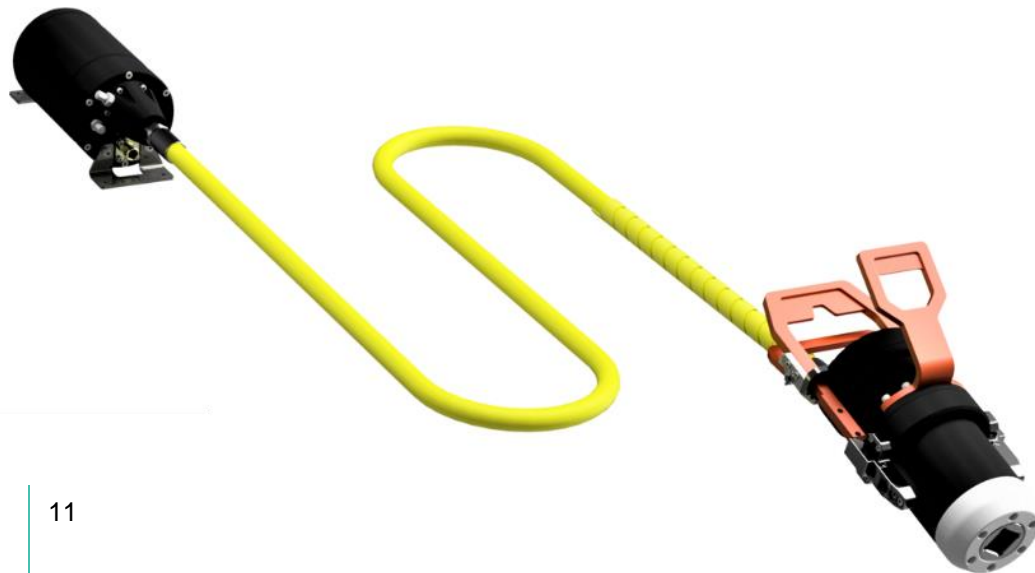
## Gearboxes & Actuators

- Compact, lightweight Torque Multiplier
- API 17H interface
- 10 to 40kNm output torque
- 50kg submerged weight
- Qualification tested
- Gearbox for permanent installation available
- Fail-Safe Actuators for critical valves



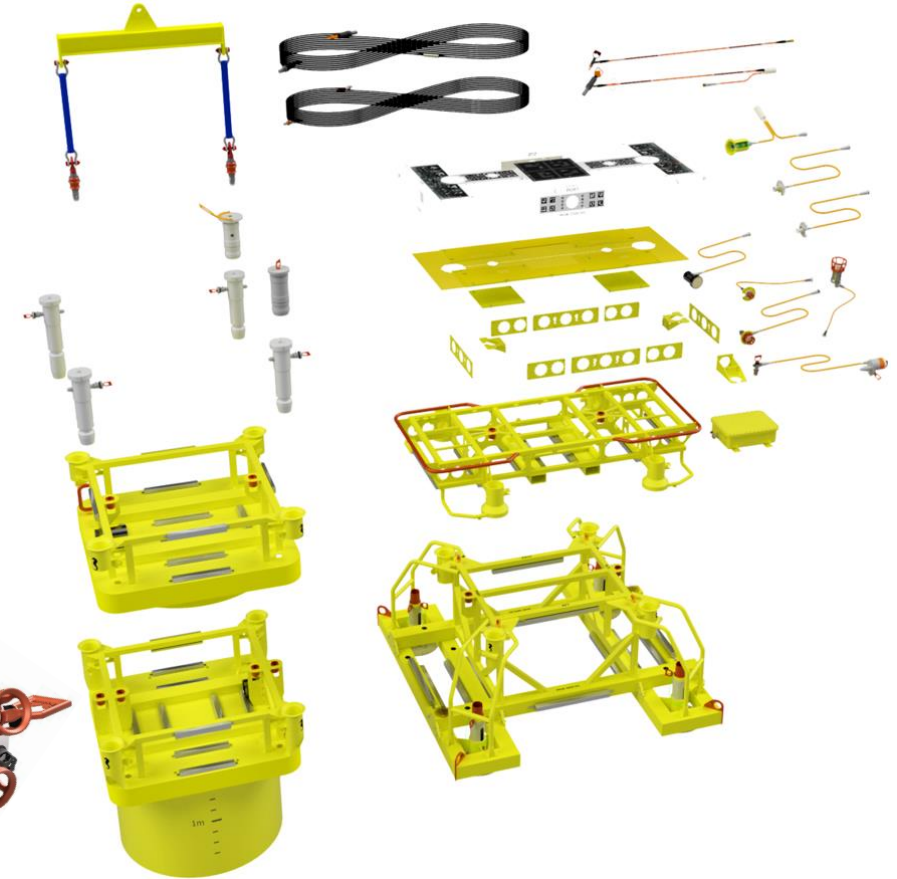
# ELECTRIC TORQUE TOOL - FEATURES

- Precise operation – accurate positioning
- No oil spill
- Full control - position, speed and torque
- Controlled operation of delicate equipment
- Logging of all parameters – create curves for all crucial data
- Ramp up – ramp down feature
- Pre-programmable multi-turn operation and sequences
- Fail-safe function – auto close/open
- Consistent torque independent of temperature



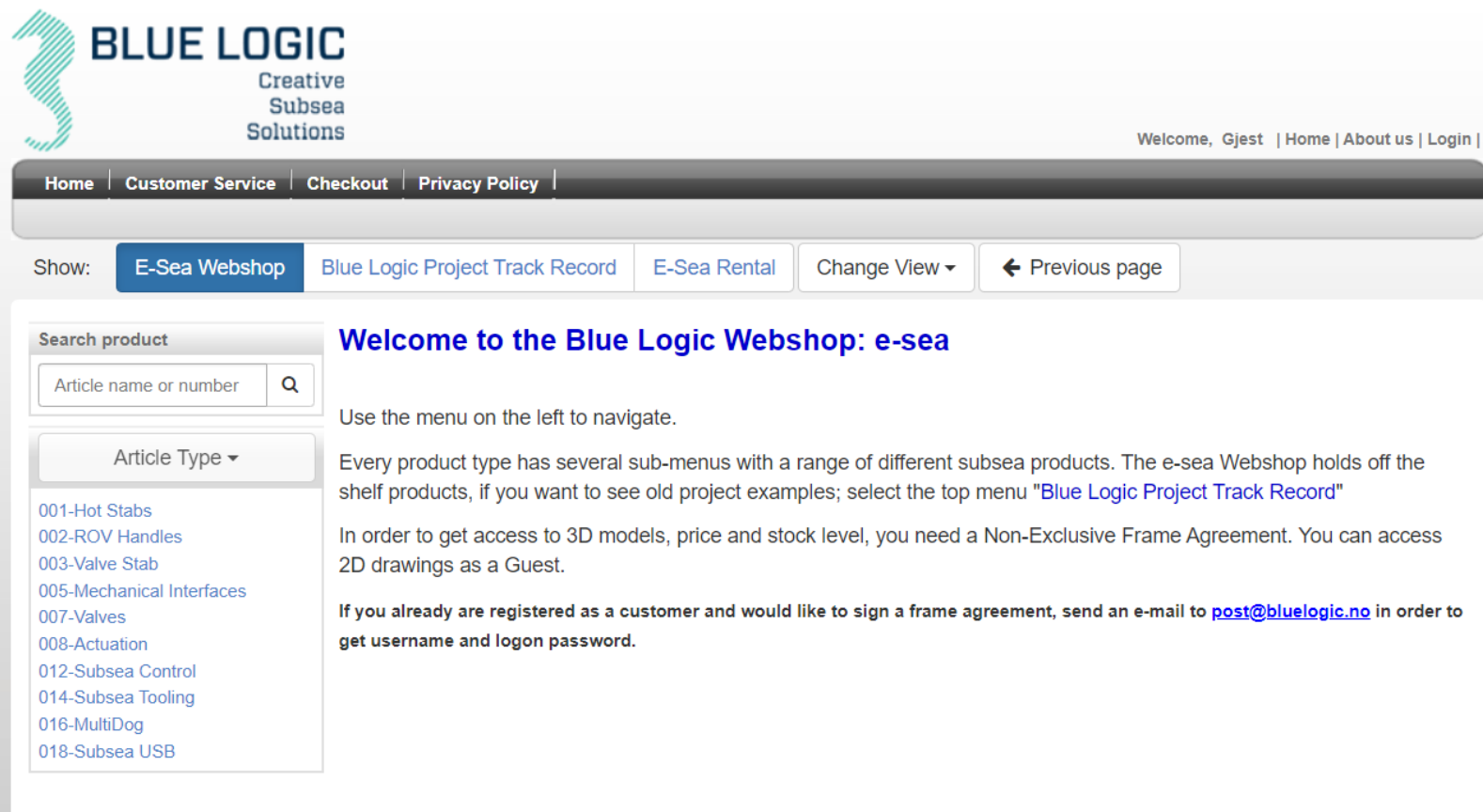
# Drone Charging

- Subsea Docking Station for charging and communication for autonomous drones.
- Permanent installation – API17H Qualified Connectors
- Charging – 50W, 250W and 2,5kW
- 2-Way Data – 80Mbps Ethernet / 230Kbps RS232/RS485



# E-Sea Webshop

- Easy access to technical information for Client and end-users
- E-Sea <https://e-sea.bluelogic.no/>
- Menu-based and categorized for easy navigation
- Download drawings and technical data – latest revisions always available



# BLUE LOGIC



Sales & Support

Phone :: +47 9100 6950

E-mail :: [sales@bluelogic.no](mailto:sales@bluelogic.no)

Web: [Bluelogic.no](http://Bluelogic.no)